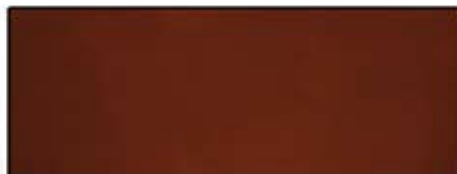
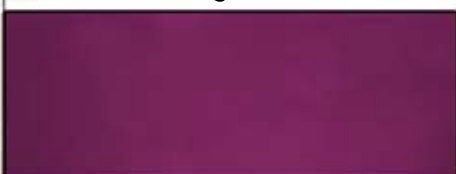


INDOOR/OUTDOOR DYES ARE A VERY UNIQUE LINE OF ULTRA VIOLET STABLE, LIQUID CONCRETE DYES THAT PRODUCE AN ACID STAIN PATINA STYLE FINISH IN A FRACTION OF THE TIME.

**COLA****DARK WALNUT****LIGHT GREEN****MALAY TAN****BLUE****DESERT TAN****VINTAGE UMBER****LEATHER****RED****BURNT ORANGE****BLACK****TERRA COTTA****TURQUOISE****ENGLISH RED****FERN GREEN****PURPLE****DARK BLUE****BROWN**

Due to variations in concrete composition, age, surface conditions, surface preparation, and application techniques exact color will vary from project to project.